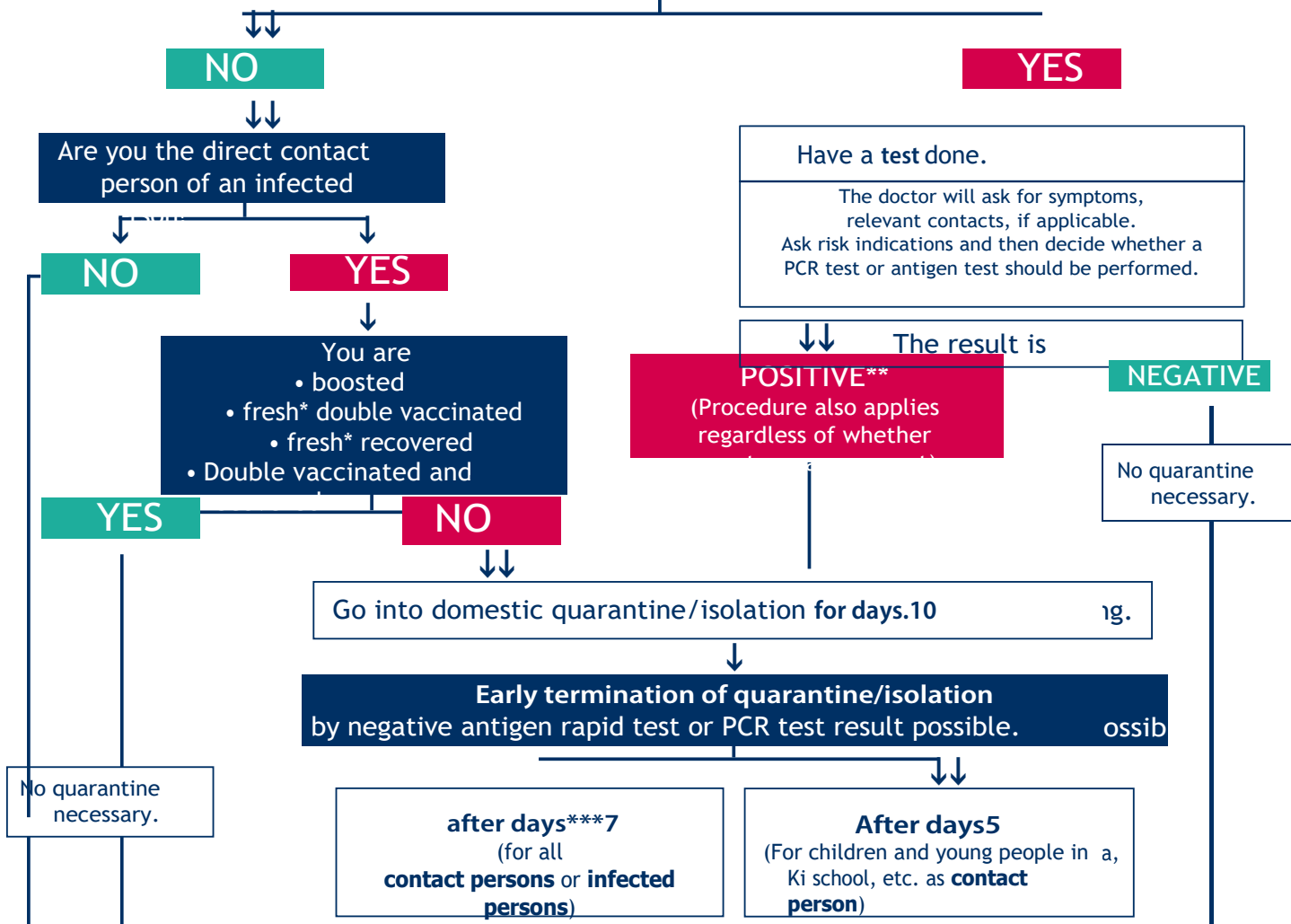


Do you have symptoms of COVID-19 infection?

(fever, cough, headache, sore throat, loss of sense of smell/taste, stomach/intestinal complaints).



Stay healthy. Continue to follow the AHA+L rules.

* The disease/vaccination occurred less than three months ago.

** In the case of a positive rapid antigen test, a PCR test is usually carried out afterwards.

*** For infected employees in hospitals, care facilities, etc., a 48-hour symptom-free period must be observed before testing. (Premature termination of segregation is only possible through a PCR test).